

SOUTH NEWMAN PRIMARY SCHOOL



**South Newman
Primary School**

Iron, spirit & courage

2022



INFORMATION BOOKLET

IMPORTANT CONTACTS

Front Office	9154 3950
School Email	southnewman.ps@education.wa.edu.au
School Website	www.snps.wa.edu.au
P&C / Canteen Email	greenschoolcanteen@gmail.com

Principal	Sonia Hammond Sonia.Proudfoot@education.wa.edu.au
Deputy Principal (Curriculum)	Jennifer Dickinson Jennifer.Dickinson@education.wa.edu.au
Deputy Principal (Student Services)	Brooke Donaldson Brooke.Moore@education.wa.edu.au
Manager of Corporate Services	Daneil Smith Daneil.Smith@education.wa.edu.au

TERM DATES 2022

SEMESTER 1

TERM 1

Monday 31 January - Friday 8 April

TERM BREAK

Saturday 9 April - Monday 25 April

TERM 2

Tuesday 26 April - Friday 1 July

TERM BREAK

Saturday 2 July - Monday 18 July

SEMESTER 2

TERM 3

Tuesday 19 July - Friday 23 September

TERM BREAK

Saturday 24 September - Monday 10 October

TERM 4

Tuesday 11 October - Thursday 15 December

PUBLIC HOLIDAYS/ PUPIL FREE DAYS

Labour Day	Monday 7 March
Anzac Day	Monday 26 April
Pupil Free Day	Friday 3 June
WA Day	Monday 6 June
Pupil Free Day	Monday 18 July
Pupil Free Day	Monday 10 October
Pupil Free Day	Friday 16 December

SCHOOL HOURS

School Start	8:10am
Recess	10:10am - 10:30am
Play Lunch	12:30pm - 12:50 pm
Eating Lunch	12:50pm - 1:10pm
School Finish	2:20pm

School gates will open from 7:30am to allow for children to have breakfast and read in the library.

Students are required to collect a late slip from the front office should they arrive after 8:10am.

WELCOME TO SOUTH NEWMAN PRIMARY SCHOOL

South Newman Primary School is an Independent Public School located in the heart of the Pilbara region of Western Australia.

As an Independent Public School, we provide a supportive learning environment to foster successful, motivated learners who strive to achieve their best.



OUR VISION STATEMENT

"Eyes on the learning. Eyes on the future."

ABOUT SOUTH NEWMAN PRIMARY SCHOOL

Our school values of Respect, Responsibility and Care and Compassion are used in our everyday dealings with each other and in the development of our programs and policies. These values form the purpose of our school and the foundation for ensuring the best school environment for all our students, staff and members of our community. This is what we call 'The Newman Way'. We value our diversity and are proud of our inclusive environment.

Our school provides a range of educational opportunities and experiences for approximately 430 students from Kindergarten to Year Six. The school staff work together as a team to make a positive contribution to the effective operation of the school.

HISTORY

South Newman Primary School was established in 1976 and enrolled 175 students in its first year under the guidance of Mr. R. McLeod, Principal.

The population grew rapidly in the following years with 320 students enrolled in 1977 and 500 in 1978. The school enrolment remained stable until numbers dropped rapidly in 1998/99, with the resurgence in the mining industry the school now caters for approximately 420 students.

THE NEWMAN WAY VALUES

THE NEWMAN WAY



- Behave responsibly toward teachers, students and others
- Take responsibility for your own learning
- Keep the school tidy and clean

THE NEWMAN WAY



- Be considerate and follow the rules
- Use your manners
- Respect yourself and others

Responsibility

SOUTH NEWMAN PRIMARY SCHOOL



South Newman
Primary School
Iron, spirit & courage

Respect

SOUTH NEWMAN PRIMARY SCHOOL



South Newman
Primary School
Iron, spirit & courage

THE NEWMAN WAY



- Support the school, friends and others
- Accept and appreciate differences in others
- Treat people how you would like to be treated

Care & Compassion

SOUTH NEWMAN PRIMARY SCHOOL



South Newman
Primary School
Iron, spirit & courage

EDUCATIONAL PROGRAMS

The programs offered to all Kindergarten to Year 6 students follow the curriculum guidelines set by the School Curriculum and Standards Authority.

South Newman Primary School works collaboratively to ensure that all learning activities are best suited to our students. We have a clear priority to focus on Literacy and Numeracy. In collaboration with the School Board and P&C, we carefully analyse school data and strive to improve the outcomes for every student.

The teaching staff ensure that all parents are informed of class timetables and learning focuses each term. We welcome parents into our school and encourage you to be an active participant in your child's education. If at any time you have any queries please do not hesitate to meet with the class teacher or the school administration team.

The learning program is made up of many Learning Areas. These include:

- Literacy
- Numeracy
- Science
- History
- Geography
- Health and Physical Education
- The Arts
- Technology and Enterprise
- German

KINDERGARTEN

South Newman Primary School Kindergarten classes are staffed by Early Childhood trained teachers and full-time education assistants. Kindergarten children attend three full days one week and two full days the following week. In 2022, children turning four before June 30 will be able to enrol.

PRE-PRIMARY

South Newman Primary School has a Pre-primary centre. The program runs across five full days, from Monday to Friday. In 2022, children turning five before June 30 will be able to enrol in Pre-primary, should they not already be enrolled in Kindergarten at the school.

STUDENT COUNCIL

The school students are represented by a Student Council, elected by the students with representatives from Year 5-6. The School Council has established a set of guidelines for the election and conduct of these students.



FACTIONS

Gascoyne Gold

Ashburton Blue

Fortescue Red

DeGrey Green

Each Faction has boy and girl Captains and Vice-Captains who are elected by Year 5 and 6 students.

THE OUTCOMES WE SEEK

We seek to ensure that the following outcomes are achieved for all students:

1. Students use language to understand, develop and communicate ideas and information and interact with others.
2. Students select, integrate and apply numerical and spatial concepts and techniques.
3. Students recognise when and what information is needed, locate and obtain it from a range of sources and evaluate, use and share it with others.
4. Students select, use and adapt technologies.
5. Students describe and reason about patterns, structures and relationships in order to understand, interpret, justify and make predictions.
6. Students visualise consequences, think laterally, recognise opportunity and potential and are prepared to test options.
7. Students understand and appreciate the physical, biological and technological world and have the knowledge and skills to make decisions in relation to it.
8. Students understand their cultural, geographic and historical contexts and have the knowledge, skills and values necessary for active participation in Australian society.
9. Students interact with different people and cultures other than their own and are equipped to contribute to the global community.
10. Students participate in creative activity of their own and understand and engage with the artistic, cultural and intellectual work of others.
11. Students value and implement practices that promote personal growth and well-being.
12. Students are self-motivated and confident in their approach to learning and are able to work individually and collaboratively.
13. Students recognise that everyone has the right to feel valued and be safe, and in this regard, understand their rights and obligations and behave responsibly.



EARLY CHILDHOOD AT SOUTH NEWMAN PRIMARY SCHOOL

At South Newman Primary School (SNPS) we believe that each child is unique and that he or she should be respected, viewed and treated as an individual with distinctive strengths, needs, interests and cultural background. Each teacher invests significant effort into building strong and trusting relationships with each child so they come to school with a smile. We are teaching essential Literacy, Numeracy and social skills that provide the foundation for lifelong learning.

We believe in providing a planned and balanced combination of purposeful play along with explicit teaching and focused activities. At SNPS the Early Years Learning Framework (EYLF), the Kindergarten Guidelines and the Western Australian Curriculum are the basis of our programs. The curriculum is adaptable, sequential and logical. Through collaborative learning we provide authentic learning experiences that help the children make meaning of their world. We aim to stimulate their curiosity, develop their understandings, nurture their skills, and cultivate positive values in them.

Our Early Childhood programs are planned to extend our students in all the developmental domains: Social and Emotional, Physical (Fine and Gross Motor), Cognitive and Language. Teachers collaboratively plan engaging, meaningful and age appropriate learning experiences that reflect the children's interests and build on their prior knowledge. Time for the children to practise new skills and opportunities for them to take educational risks in a safe environment is provided in daily programs. Every teacher has a keen desire to model appropriate behaviours and expectations while they work 'shoulder to shoulder' with the children. Reflective practice is a priority and regular Professional Learning sessions are presented to keep our teachers at the cutting edge of educational developments.

Assessments in early childhood are age appropriate, fair, educative, explicit and purposeful. The teachers use their ongoing assessments to determine what the children already know so they can plan learning experiences that build on that prior knowledge.

One of our priorities is the creation of a comfortable and safe learning environment both inside and outside the classroom. Four classrooms have been specifically renovated or built to suit Kindergarten and Pre-Primary purposes. Each classroom is set up to facilitate individual learning needs and includes areas for explicit learning in singular, small, or whole group activities. There is also space provided for imaginative play, creative arts, relaxation or rest. The outdoor learning area is currently in the process of being renovated to include a nature playground, featuring seating for meal times, vegetable and flower gardens, worm farms, compost bins and a water pump.

We make every effort to create the best learning environment possible for our students, as the early years are essential for children's development.



KINDERGARTEN

Welcome to Kindy 2022. This is such an exciting time for you and your child. We sincerely hope you all find our Kindy program rewarding, both socially and academically. So many memories are made at school and we will endeavour to make Kindy a memorable time for your child.

As this will be your child's first experience at school it is important that it be a positive and enjoyable one. It is for this reason that we request the close cooperation of parents throughout the year. We would ask you to keep us informed of anything that may have some bearing on your child's educational progress. Our school community has a strong philosophy of parents as partners.

Please feel free to approach us with questions you may have or to make an appointment for a Parent/Teacher meeting.

SESSION TIMES

In 2022, we will have two Kindergarten classes. Kindy A and Kindy B. These two classes will alternate between 3 full days and 2 full days per week.

STAGGERED INTAKE

Staggered intake allows students for a smooth transition in to Kindergarten, allowing a smaller session to get used to being in the school environment.

SCHOOL PICK UP/DROP OFF

Written, emailed or verbal notification is required if someone other than the mother, father or legal guardian is to collect your child. We require parents to complete a Duty of Care form should someone else be collecting your child on a regular basis.

Where possible, it would be appreciated if other parties who will be picking up children could come and introduce themselves to staff for recognition purposes.

All students are to be signed out at the front office if they are leaving during school hours.

We encourage parents to stay for a short while at the beginning of the day to do puzzles or read a book with your child. We ask that you supervise younger siblings as most activities have been set out early for your child's activities that morning.

PARENT HELP ROSTER

We enjoy having parents coming in to spend time with their child for parent help. The classroom teacher will let you know when the parent help roster is available to put your name down. It is better for you, your child and the classroom if you visit without younger siblings; this is a special time for you and your Kindy child. Parents, grandparents and other significant adults are all welcome.

Your participation in your child's education is invaluable to their success at school.

COMMUNICATION BOOK

A communication book is available in the classroom for important notices, such as absences and alternative pick up arrangements.

Week 1: Odd Week

Kindy A:
Mon, Tues, Wed
Kindy B:
Thurs, Fri

Week 2: Even Week

Kindy A:
Mon, Tues
Kindy B:
Wed, Thurs, Fri

**these classes will continue to alternate each week as shown*

PROGRAM OBJECTIVES

Kindy will be the beginning of a fantastic journey that we are excited to be sharing with your child.

Our carefully planned program is designed to address the individual needs of each child, helping him/her to grow physically, creatively, socially, emotionally and intellectually through participation in a variety of group and individual experiences. Play is seen as an important medium through which development and learning can occur.

The program provided over the year is designed to help your child to:

- develop a sense of self-regulation and control
- interact with other children and adults to develop positive social skills
- develop language skills
- explore our world and be creative
- practice and develop physical skills
- maintain an enjoyment and enthusiasm for learning.

FRUIT AND VEGETABLES

Please send cut fruit or vegetables with your child each day for Crunch and Sip and recess. We recommend fruit and vegetables to be crunchy, not squishy and wet.

We also ask that your child brings in a drink bottle each day that contains water only, clearly labelled with their name.

BIRTHDAYS

Birthdays are very special to you and your child. To help celebrate, if you would like your child to share their birthday with the class, you are more than welcome to bring in cupcakes to share. Please let the staff know in advance and ensure that there are adequate servings to share with all children. You will also need to check with your child's teacher for any food allergies. Nuts must never be an ingredient regardless of the allergies in your child's classroom.

COMMUNICATION

NEWSLETTERS

Newsletters are posted on the SkoolBag App and Facebook page on Friday in Weeks 5 and 10 of each term. Keep an eye out for special notices and great photos of day-to-day activities.

SKOOLBAG APP

Our SkoolBag app is the most efficient way to receive current information regarding notices and events happening in the school. It can also be used to notify the school of absences. Download the Skoolbag app on your app store.

SOCIAL MEDIA PAGES

Our school Facebook page is regularly updated with photos and school updates. Like and follow our pages to stay up to date with the latest information.

ASSEMBLIES

Assemblies are held in the undercover area at 8:15am sharp on Wednesday mornings each fortnight.

A different class group conducts each assembly and presents an item. Students from each class are presented with merit certificates for either academic achievement or their display of the Newman Way values. Families and caregivers are welcome to attend our assemblies.

PARENT-TEACHER MEETINGS

Parents are always welcome at school. If you wish to discuss your child's progress it is best to make an appointment with their teacher. Parents will be contacted if a teacher wishes to discuss any aspect of their child's schooling.

SCHOOL WEBSITE

Our school website is updated regularly with comprehensive information on school curriculum programs, latest business plans, annual reports and general business. Check the website to find out more about the way we do things at South Newman Primary School.

Stay informed with the SkoolBag App



The SkoolBag app is the easiest way to stay up-to-date with school events, last minutes notices, newsletters and all school communications.

1

Download the app

Search for the free SkoolBag app in the Apple App or Google Play Store

2

Create an account

Sign up in seconds with your email address

3

Add your school

Search for your school and add your subscription groups



SkoolBag

South Newman Primary School
Facebook Page



South Newman Primary School
P&C Association

South Newman Primary
School Website
www.snps.wa.e.du.au



ORGANISATION

ENROLMENT

An enrolment form must be completed and signed by a parent or guardian before a child can be enrolled at our school. For children enrolling for the first time, a birth certificate must be produced, as well as a copy of their immunisation record. The school must have a photocopy of any custody or court orders relating to the child to attach to the school records. Information regarding health conditions, contact phone numbers and emergency contact persons needs to be provided and updated when necessary.

STUDENT TRANSFERS

If your family is leaving the school, it is important to advise the school office and class teacher. Upon leaving, children will take their personal belongings with them. School records are forwarded when SNPS receives a transfer note from the new school.

ABSENT FROM SCHOOL

All absences are required by law to be explained. Please contact the front office if your child will be absent. Each day at approximately 10am an SMS is sent automatically to parents if students are absent without a prior explanation. Please respond with a text message or phone call to the front office.

Please contact the front office if you plan on taking holidays during the school term. Regular attendance is a critical factor in your child's success at school. Attendance for all students from Pre-primary to Year 6 is compulsory. In Kindergarten, although not compulsory, we strongly encourage regular attendance. The school follows up unexplained absences, including absenteeism in Kindergarten. Please note that all instances when vacations occur with the school term are classified as unauthorised absences. The school policy states school work for students to complete during their family holidays will not be provided by the classroom teacher, as the school does not condone such absences.

FAMILY DETAILS

It is important that the school has up-to-date details for each child. Please advise the front office of any change of address, telephone number or emergency contact. It is stressful for a sick child when we are unable to contact parents.



VOLUNTARY CONTRIBUTIONS

A voluntary school contribution enables our school to purchase items to provide the highest quality education to your child. It would be appreciated if this contribution is paid early in the school year to purchase the items for use in your child's class. Eftpos facilities are available in the front office and bank details can be provided upon request.

One Child Kindy to Year 6 \$60.00
Two Children Kindy to Year 6 \$90.00
Three or more Children Kindy to Year 6 \$110.00

Kindy

70% - Craft Materials
20% - Stationery
15% - Reference Materials

PP – Year 6

50% - Literacy and Numeracy Exercise Books and Resources
30% - Science/Art and other learning areas
20% - Classroom Consumables

The South Newman Primary School P&C Association undertakes fundraising each year. The P&C asks parents to also pay a donation of \$30.00 per family to support the P&C Association.



ORGANISATION

SCHOOL PICK UP

Parents are asked to exercise extreme care when dropping off or picking up children from school.

The parking bay at the front of the school is kept clear for this purpose; a time limit is advertised and enforced by the local shire ranger. The main parking area is south of C Block, along Thulluna Crescent or at the back of the school next to Capricorn Oval. **Parents are asked not to park in the staff car park off Gregory Avenue.**

We require parents to complete a Duty of Care form should someone else be collecting your child on a regular basis. This form is located at the front office.

LOST PROPERTY

Please ensure that all books, clothing, shoes and personal possessions are clearly marked with your child's name. Any lost property found is placed in a lost property box in the Outdoor Kitchen. At the end of each term, any unclaimed lost property is donated.

BICYCLES AND SCOOTERS

Students riding bicycles to school are required by law to wear bike helmets. Bikes and scooters are not to be ridden on the school pathways or anywhere in the school grounds. No responsibility will be taken for bicycles left behind after school. It is highly recommended that children under the age of 10 do not ride bikes unless supervised by an adult. Bike and scooter racks are provided in the undercover area but locks and chains are recommended to secure to the racks.



REPORTING & TESTING

REPORTING TO PARENTS

Formal reporting will occur at the end of Semesters 1 and 2. All students will receive a formal report detailing their progress in key learning areas, as well as indications of student attitude, behaviour and effort. Parents are encouraged to contact the class teachers during the year to discuss your child's progress.

KINDY PORTFOLIOS

Kindergarten students receive an A2 Portfolio at the end of each Semester with the work they have completed throughout the Terms. This Portfolio is on each student booklist.

NAPLAN

NAPLAN is designed to provide information about a student's literacy and numeracy achievements. NAPLAN is the only national assessment that Australian children undertake. It complements other school assessments and provides nationally comparable data to help governments evaluate how education programs are working and whether students are meeting important literacy and numeracy standards. NAPLAN results help:

- parents and students to discuss individual student progress with teachers
- teachers to better identify students who need greater challenges or extra support
- schools to identify strengths and areas of need in teaching programs
- schools to set goals in literacy and numeracy
- school systems to review programs and support offered to schools
- the community to see average school results on the My School website. Your school principal will be able to give you more details on how your school uses NAPLAN results.

If you wish for your child to be exempt from NAPLAN please contact the school at the beginning of the school year.

SCHOOL DISCIPLINE

BEHAVIOUR MANAGEMENT IN SCHOOLS (BMIS) POLICY

Behaviour Management in Schools is a program undertaken to ensure all students recognise that everyone has the right to feel valued and be safe, and, in this regard, understand their rights and obligations and behave responsibly.

Our school has adopted a system based upon an agreed set of rules that invokes rewards for positive behaviour and a consequence for repeated inappropriate actions. It is intended that all students are accepting of and responsible for their own behaviour.

The management of student behaviour is a staff, parent and student shared responsibility. Its success is based upon the recognition of the dignity and worth of all individuals. The school endeavours to:

- Create a positive environment so teachers and students can work together purposefully
- Create a caring school environment where the rights and responsibilities of the individual are recognised and respected
- Establish a set of rules that protect the rights of all individuals, are applied consistently and reviewed regularly
- Establish a clear set of consequences for individuals who do not accept their responsibilities and break rules to encourage them to recognise and respect the rights of others
- Establish procedures to resolve conflicts in a positive manner
- Proactively promote positive and responsible student behaviour which is ultimately self-managed.

RIGHTS

To feel safe
To learn
To be respected
To be valued

RESPONSIBILITIES

To respect yourself
To respect others
To use judgement
To support others
To respect property

THE VITAL ROLE OF PARENTS

- Be aware of the signs of distress in your child, e.g unwillingness to attend school, a pattern of illness, missing equipment, requests for extra money, damaged equipment or clothing.
- Take an active interest in your child's social life and acquaintances.
- Assist your child to discuss any incidence of bullying with a teacher. If possible, allow your child to report and deal with the situation.
- If your child is being bullied, discourage any planned retaliation, either physical or verbal, by discussing positive strategies they can use.
- Be positive about your child's qualities and encourage your child to be tolerant and caring.
- be willing to attend interviews if your child is involved in an incident of bullying, and work cooperatively with the school
- be willing to inform the school of any cases of suspected bullying even if your child is not directly involved or affected
- do not deal directly with the other children or their parents but work through and with the school
- discuss the school's expectations about behaviour and how best to deal with bullying

SCHOOL RULES

To uphold the school's code of behaviour the following rules have been developed:

Children will:

- Play appropriate and safe games where physical contact is minimal and non-violent.
- Follow The Newman Way values when interacting with others and their surroundings.
- Consider the safety of others while playing in designated areas.
- Play with equipment in a safe way – No kicking balls in the undercover area.
- Remain within the school grounds and designated play areas.
- Request a duty teacher to retrieve equipment from outside the school grounds.
- Only enter classrooms and wet areas when a teacher is present or with teacher permission.
- Eat food sitting down in designated eating areas and ensure all rubbish is placed in bins.
- Year 1-6 students remain in undercover area before school, unless using the toilets.
- All students will wear approved school broadbrim hat when participating in outdoor activities.
- Kindergarten and Pre-primary students remain with parents or appropriate guardian before and after school.
- Walk bicycles and scooters, and carry skateboards within school grounds.
- Obtain permission to leave classroom and/or school grounds.
- Wear appropriate joggers or sandals with an ankle strap.
- Late students sign in at the front office on arrival.
- Be accepting and inclusive of diversity.
- Mobile phones are switched off, checked in and held in the front office until the end of the school day.
- Students and parents sign Acceptable Use Agreement upon enrolment.
- Wear a broadbrim hat during recess and lunch. Students who do not have a hat will be asked to play in the undercover area.

SCHOOL DISCIPLINE

PLAYGROUND MANAGEMENT POLICY

Children are expected to follow simple playground rules relating to playing appropriately, respect for property and the rights of others. Duty teachers will use professional discretion in dealing with incidents. For minor infringements, students may be told to play elsewhere, sit out 5 minutes or take time out to reflect on their actions. No consequence is to be demeaning or harsh. The duty teachers are responsible for the safety and acceptable behaviour of students in the areas they supervise.

POSITIVE INCENTIVES FOR STUDENT BEHAVIOR MANAGEMENT

We offer initiatives to encourage appropriate student behaviour by offering a range of incentives such as:

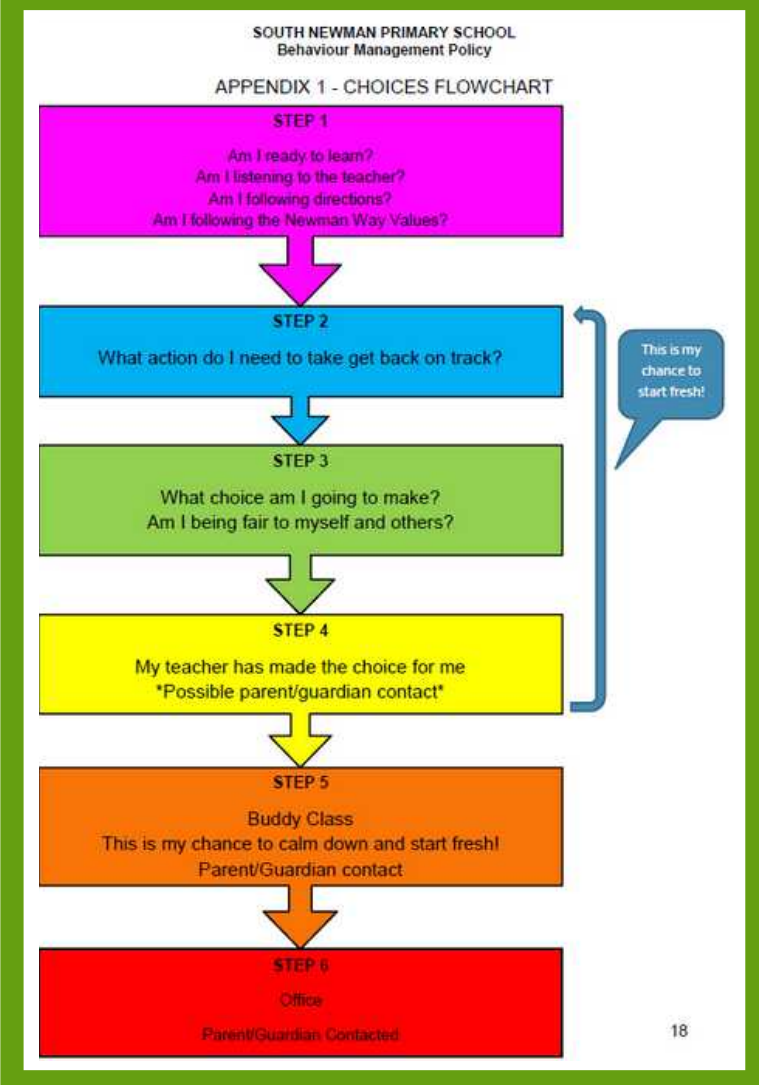
- Merit Awards - These awards are announced at each assembly.
- School Captains – Two Year 6 students are elected by Years 3-6 to be the school captains.
- Student Council – Six Year 5/6s are elected by their peers. Student Councillors can organise special events and awards for students.
- Faction Captains – Year 6 students are elected by their factions to lead their faction and help organise sporting events.
- Recognition of student work and effort displayed in front office, school bulletin boards, wet areas and library.
- Students are encouraged to participate in community events.
- Representation of school in the wider community e.g. commemoration days, school camps and excursions.
- Recognition of out of school achievement in class, at assemblies and in the school newsletter.
- PowerPoint presentation in the front office of school activities and student achievement.
- Attendance, tidy wet area and canteen awards at assembly.
- Attendance reward days at the end of each term.

BULLYING

South Newman Primary School does not tolerate bullying in any form. The school community is committed to ensuring a safe, caring environment which promotes positive self-esteem for all.

What is bullying? Bullying is defined by the Department of Education as; *"When an individual or group misuses power to target another individual or group to intentionally threaten or harm them on more than one occasion. This may involve verbal, physical, relational and psychological forms of bullying. Teasing or fighting between peers is not necessarily bullying."*

- Bullying can be an act of aggression or harassment causing embarrassment, pain or discomfort to another.



- Bullying is varied in form: physical, verbal, non-verbal or cyber; including gesture, extortion and exclusion.
- Bullying is an abuse of power.
- Bullying can be intentional or unintentional.
- Individuals or groups may be involved.
- Bullying may be overt and covert.

Bullying is not mutual conflict where there is an argument or disagreement between students, but not an imbalance of power. Both parties are upset and usually want a resolution to the problem. However, unresolved mutual conflict sometimes develops into a bullying situation with one person becoming targeted repeatedly as retaliation.

Social rejection or dislike is not bullying. It is not feasible to think that every student must like every other student. Refusing to play with a particular child or, for example, not inviting them to a birthday party is not bullying, provided social rejection is not directed towards someone specific and involves deliberate and repeated attempts to cause distress, exclude or create dislike by others.

Single episode acts of nastiness or meanness, or random acts of aggression or intimidation is not bullying. The difference is that bullying is, by definition, actions that take place on more than one occasion.

Reports of bullying are taken very seriously and fully investigated. Parents are notified if their child is involved in any way.

SCHOOL FACILITIES

SCHOOL LIBRARY

The school library contains audiovisual material in addition to a large range of books, including fiction, non-fiction and reference. The books have been provided by the Department of Education as well as the school P&C. In order to preserve our books, all children are expected to have a library bag. Children may borrow books during class library periods if they have a library bag. Parents will be charged for any damaged or lost books.

CANTEEN

The P&C Association runs the school canteen. It operates each school day. Parent assistance is needed and appreciated. A menu is available at the canteen. Lunch orders (with money) are taken each morning before school at the canteen. Snacks are available at recess and lunch times. Lunch orders can be placed online before 9am using the website www.quickcliq.com.au.



SCHOOL REQUIREMENTS

BOOKLISTS

Each student has a list of requirements for the school year. OfficeMax is our stationery provider. Booklists are distributed to parents at the end of the year and can also be downloaded from the Skoolbag App or School Website throughout the school year. Alternatively the items on the booklist can be purchased by the parent at any shop. All items should be clearly marked with the child's name.

SCHOOL BAG

Labelled school bags of a suitable size should be used to protect books and materials carried to and from school.

SCHOOL UNIFORM

South Newman Primary School has a uniform which all children are expected to wear.

These items are available at Sportspower Shop 7, Parnawarri Shopping Centre, Newman WA 6753 Phone (08) 9175 1337

The school uniform consists of:

- Green and black polo shirt with school logo
- Black shorts, skorts or pants
- Broadbrim hat
- Faction polo shirt

All children should wear suitable footwear. Joggers or sandals with an ankle strap are advisable. For safety reasons thongs are not acceptable. Jewellery and other sentimental items should be kept at home.

The school's policy is that children must wear a labelled broad brim hat at all times when outside. Hats can be purchased from the uniform shop.

We enforce a **NO BROADBRIM HAT, NO PLAY** policy. Children without a hat must play in the undercover area for the duration of recess or lunchtime.

PARENT INVOLVEMENT

PARENT HELPERS

Parents are involved in day-to-day activities at school in a variety of ways.

- Helping with class activities such as reading.
- Helping with activities such as book covering and excursion supervision.
- Volunteer service in the canteen.
- Assisting with Library work.

Please contact your child's class teacher, the canteen manager or library officer if you wish to participate in any of the above activities. We require parents to sign in at the front office.



Open an account on the website below to gain access to the school lunch ordering system.

<https://quickcliq.com.au/>

PARENT AND CITIZENS' ASSOCIATION

The South Newman Primary School P&C Association is a team of volunteers which aims to promote cooperation between parents, teachers, students and members of the wider community. They assist in providing resources, facilities and amenities for the school using money fundraised throughout the year at various events, such as the Mother's and Father's Day stalls, and the Lap-a-thon. The P&C also runs the canteen and sells school uniforms.

Becoming a part of the P&C Association is a great way to contribute to the school community and a great social opportunity for parents. They are always looking for new members, so please contact greenschoolcanteen@gmail.com should you wish to become a member.

SCHOOL BOARD

The School Board plays a role in establishing the school's direction, priorities and policies, such as homework, uniforms, budget approvals and community engagement. The School Board is heavily involved with the Business Plan, Annual Reports and Independent Public Review.

The School Board consists of our school principal, parents, staff and community members who complete a three-year term, towards the end of that term a whole school voting system is completed for a new panel of Board Members. Please express your interest to the front office should you wish to be a part of the Board



HEALTH AND MEDICAL INFORMATION

SICK OR INJURED CHILDREN

Parents will be contacted if their child is too sick to remain at school, or if some form of medical attention is needed. The school has very limited first aid facilities and only minor care can be given by school staff.

SCHOOL HEALTH CHECKS

From time to time, members of the School Health Services carry out checks and examinations of children. A nurse visits the school weekly, and parents who feel they should contact her about a medical matter can do so through the school.

ROUTINE SCREENING

All children participate in the following screenings:

- Kindy: Vision, Hearing and General Health
- Pre-primary: Vision, Hearing and General Health (if not conducted during Kindy)
- Year 1: Vision, Hearing (if not conducted during Kindy)

IMMUNISATION POLICY

Upon enrolment all parents are requested to provide a photocopy of their child's immunisation records. It is Health Department policy to exclude children from attending school who are not fully immunised during outbreaks of vaccine preventable diseases.

MEDICAL FORMS

It is a requirement the school is aware of all medical conditions at the time of enrolment. Should your child have a health care plan, allergies or medications the school will provide you with medical forms that must be returned to the front office and must always be up-to-date.

NUT AWARE SCHOOL

We have several children in our school who have a severe food allergy to peanuts. We would greatly appreciate if your child could enjoy peanut based foods at home as the slightest exposure to peanuts can cause a severe allergic reaction. Please also inform your child's teacher should you wish to bring in any food for the class to celebrate a birthday, this way the teacher can inform the parents of children with allergies to arrange an alternative option for their child.

COMMUNICABLE AND INFECTIOUS DISEASES

Suffering from the following illnesses require a child to be excluded from school for a period of time. If you have a sick child and are in doubt about whether or not they should attend school, please contact the school health nurse, Sonic Health or school to discuss the matter.

CHICKEN POX

Caused by contact with infected persons and indirectly through items freshly soiled by discharges from an infected person. Incubation Period: 13-17 days (usually 12 days). Period of communicability - from two days before rash to six days after onset of last crop of blisters. Exclude from school until feeling well and all lesions are crusted (no blisters).

IMPETIGO-SCHOOL SORES

Caused by contact with infected person. Incubation Period: 1-3 days. Period of communicability - Until sores are treated. Exclude from school until effective treatment (including the proper use of occlusive dressings) has been instituted.

MEASLES

Infected by spray or droplets from infected person, or indirectly through articles freshly soiled by discharges from nose or throat of infected person. Incubation Period: 8-14 days (usually 10 days). Period of communicability - from 4-5 days before rash to four days after.

CONJUNCTIVITIS

Caused by direct or indirect contact with secretion from infected eyes or insect carriers. Period of communicability - while eye discharge is present. Exclude from school until discharge from eyes has ceased.

HEAD LICE

Head lice are now resistant to most chemical treatments. Any use of pesticide treatment must be diligently followed by manual removal of all eggs and adult lice for a 21 day cycle or, alternatively, the 10 day conditioner method is recommended. Detailed plans to do this are available from office staff and the school nurse. Weekly checks, tying long hair back and frequent brushing are good preventative measures. If lice are detected the school will exclude the child at the end of the day. Children should be treated prior to returning to school.

HOMEWORK POLICY

RATIONALE/BELIEFS

Homework for primary school children should be minimal, in order that a balance of play, rest and exercise can be achieved. In the Early Years, homework should largely be informal and non-compulsory. As children move towards the Upper Primary years they should progressively be exposed to more structured homework requirements in order to facilitate a smooth transition to secondary school through the development of good study habits. Homework should always be seen as a vehicle to enhance student learning outcomes and foster positive school/home partnerships.

TIME ALLOCATIONS

YEARS 1-2

No formal homework set but daily home reading is strongly encouraged for 10-20 minutes. This should include home readers, sight words, children reading to parents, parents reading to children and children reading independently.

YEARS 3-4

No formal homework set but daily home reading is strongly encouraged for 10-20 minutes. This should include Accelerated Readers, children reading to parents, parents reading to children and children reading independently. At times students may receive homework to support classroom activities.

YEARS 5-6

Up to 30 minutes of independent reading is strongly encouraged. Parents are still encouraged to read to and with children. Monday - Thursday students work towards an established routine of up to 30 minutes of set daily homework.

STUDENTS REQUIRING ADDITIONAL SUPPORT

Some students have particular learning needs due to a learning difficulty or developmental delay. On occasion it can be useful to support such students with targeted specific activities designed to reinforce or develop a concept. Teachers and parents can work together to negotiate such activities with the aim to encourage and support the child.

NATURE OF HOMEWORK

YEARS 1-2

- Sight words
- Home reading - shared and independent
- Voluntary research to support classroom activities
- Voluntary practice of basic number facts
- Discussion of vocabulary from class activities

YEARS 3-4

- Home reading - shared and independent
- Voluntary research to support classroom activities
- Voluntary practice of basic numbers facts
- Discussion of vocabulary from class activities

YEARS 5-6

- Independent home reading
- Voluntary research to support classroom activities
- Specific tasks to support classroom learning progress
- Practice of basic number facts
- Discussion of vocabulary from class activities

ACTIVITIES PARENTS CAN USE TO SUPPORT STUDENT LEARNING

ALL YEARS

- Audio book for long car travel
- Board games, card games, dice games
- Reading stories at bedtime
- Cooking
- Outdoor games and activities
- Play charades and other drama type activities
- Watch TV together and talk about issues
- Do crosswords, puzzles and jigsaws
- Use a computer to search for interesting educational internet sites
- Discuss new words

THE MOST IMPORTANT THING YOU CAN DO

READING - THE FOUNDATION FOR SUCCESS

Reading is the fundamental skill for all learning, and primary school is where children develop their love and enthusiasm towards reading. In just a few short years, most children go from singing the ABC song to mastering books. To help your children become skilled readers, try the following suggestions.

READ TO THEM

Reading to your children is the single most important thing you can do to help children develop a love of books and reading. While bedtime is traditionally story time, don't limit yourself. Keep books in your car, in your bag, by the couch, and even by the bathtub. That way, reading can easily be made part of the day. Also, keep books on low shelves, on the floor, in toy boxes, or anywhere else your children can easily access them.

HAVE PLENTY OF MATERIAL

Books aren't the only thing children can read. Posters, maps, magazines, recipes and newspapers are great reading material. Computer games and apps that emphasise reading skills may also be useful for your school-age children.

LISTEN TO THEM READ

From the day your children begin sounding out letters, concentrate on how they're doing. Try to include some 'read aloud' time where they're reading to you in your everyday routine. You can offer them praise and catch early problems before they have time to become habits.

LET THEM CHOOSE

Within reason, allow your children to choose their own reading material. If they choose what to read, they'll be more likely to actually spend time reading. Sign your children up at the local library and entrust them with keeping their books in good shape and returning them on time.

MODEL GOOD READING HABITS AND LIMIT SCREEN TIME

Your children need to see that reading is a lifelong skill and a form of entertainment. Take them to the library to choose books, and choose some for yourself too. If you can, when reading newspapers, magazines or online articles, discuss what you read with your children. This shows children that reading isn't only schoolwork - it's something that is an integral part of everyone's life. Also, limit the amount of time spent watching screens.

ASK THE TEACHERS

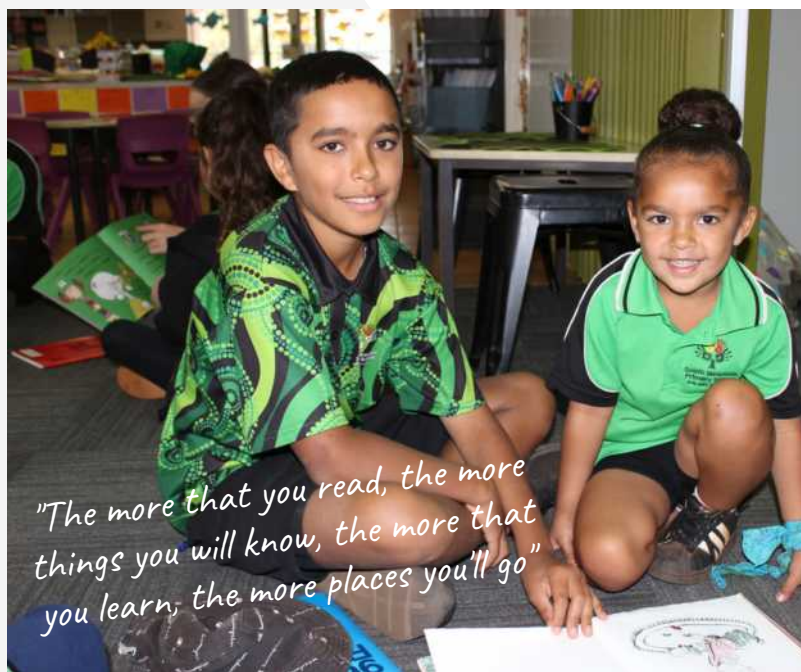
Ask your child's teacher if your child has areas in which he or she may need extra help. Also, make sure to let the teacher know if you've noticed any reading problems at home. Working with the teacher and school should ensure your child's continued reading success.

GET EXCITED

Give your child lots of praise and encouragement when it comes to reading. Show you're excited about what they are reading and learning about.

MORE IMPORTANT THAN EVER

Just 15 minutes of reading per day can change your child's life. It is a skill that comes only with practice, and, like any form of exercise, the more, the better. It is an investment in a lifelong skill that unlocks all knowledge, and it will become more important as the amount of information available constantly increases.



"The more that you read, the more things you will know, the more that you learn, the more places you'll go"

ATTENDANCE

Going to school every day is vitally important so your child does not miss out on important ideas, concepts, knowledge and skills for future learning. At South Newman Primary School, we want your children to do their very best. To get the best education, they need to go to school every day. By working together, our school community can support your child's attendance.

What can you do to help?

- Have a set time for your child to go to bed at night and get up in the morning.
- Have their uniform and school bag ready the night before.
- Have a set time for breakfast.
- Set a time for daily homework activities.
- Talk about school positively.
- If running late, encourage your child to still go to school and reassure them that you will let the school know.
- Organise for your child to meet a friend before school so they can arrive at school together.
- Get involved at school through volunteering or join the Parents and Citizens' Association.

Do you need to let the school know if your child will be away from school?

Yes, you need to let the front office know that your child will be absent from school and the reason why as soon as possible. Having information about why a child is missing school helps us plan for their return to school and to work out whether we can provide any further help to you.

What will staff at South Newman Primary School do to help?

- Offer developmentally, socially and culturally responsive learning opportunities to engage students.
- Monitor every student's attendance and work with parents to overcome problems affecting attendance.
- Provide predictable routines to help students know what to expect to reduce anxiety about going to school.
- Talk with you about involving support staff such as school psychologist, Aboriginal and Islander Education Officer and other agencies or organisations to help.
- Talk with you about local services that may also be able to help such as Save the Children, Remote School Attendance Strategy, Polly Farmer Foundation, Mission Australia and Clontarf Foundation.

Attendance matters for achievement

- Regular (90% or greater)
- Indicated (80% to <90%)
- Moderate (60% to <80%)
- Severe (<60%)

If a child misses...	that equals...	or...	From PP to year 12 that adds up to...	Which is the equivalent of attending until:	Attendance category
1 day per fortnight	20 days per year	1 month per year	nearly 1 ½ years	part-way through year 11	Regular 90 % or above
1 day per week	40 days per year	2 months per year	over 2 ½ years	part-way through year 10	Indicated 80 % to 90 %
2 days per week	80 days per year	4 months per year	over 5 years	the end of year 7	Moderate 60 % to 80 %
3 days per week	120 days per year	6 months per year	nearly 8 years	the end of year 4	Severe 60 % or less

SCHOOL SONG

With our green flag flying above us
and our best friend by our side
Iron, Spirit and Courage
our hearts are full of pride
Iron, Spirit and Courage
to face up to the test
Iron, Spirit and Courage
South Newman is the best.

AUSTRALIAN NATIONAL ANTHEM

Australians all let us rejoice,
For we are one and free;
We've golden soil and wealth for toil;
Our home is girt by sea;
Our land abounds in nature's gifts
Of beauty rich and rare;
In history's page, let every stage
Advance Australia Fair.
In joyful strains then let us sing,
Advance Australia Fair.

Beneath our radiant Southern Cross
We'll toil with hearts and hands;
To make this Commonwealth of ours
Renowned of all the lands;
For those who've come across the seas
We've boundless plains to share;
With courage let us all combine
To Advance Australia Fair.
In joyful strains then let us sing,
Advance Australia Fair.

CYCLONE INFORMATION FOR PARENTS

Cyclone Watch/Warning:

Children are to attend school as per normal.

Blue Alert

In a blue alert the school will usually remain open.

If a Yellow Alert is predicted and likely to be declared at some time during the school day *the school will not open and children are to remain at home.*

If the school is to close, this information will be broadcasted via the following local radio stations. Emergency information is broadcasted at approximately ¼ past the hour. The frequency of the updates will depend on the type of cyclone alert. School closure will be broadcasted between 6.15am and 7.45am.

- ABC Radio (Official Broadcast)
- Spirit Radio (Unofficial Broadcast)

The closure advice will be repeated each morning until the decision to re-open the school is made.

School buses may be affected at this stage. Any change to the bus operation will be given on the radio at the above times.

PLEASE DO NOT RING THE SCHOOL. All information and updated reports relating to the warnings and school closure **ARE ISSUED ON THE RADIO**. Please keep yourself informed.

Yellow Alert

If a Yellow Alert is declared during a school day, the following will occur:

- Yellow Alert before 12:00: – students can be picked up immediately from their classroom. The school will close at lunch time. Students will not be sent home until instructions are received from parents.
- Yellow alert after 12:00: – students can be picked up immediately from their classroom. The school will close at the usual time. Students will not be sent home until instructions are received from parents.
- Yellow alert after 14:00: - If a Yellow Alert is called at or after 2.00pm schools will generally be closed the following day. Please continue to listen to the radio to receive information as to when schools will open.

The above does not preclude immediate closure in extenuating circumstances and if deemed necessary by the Cyclone Committee.

Red Alert

The School will remain closed during a Red Alert.

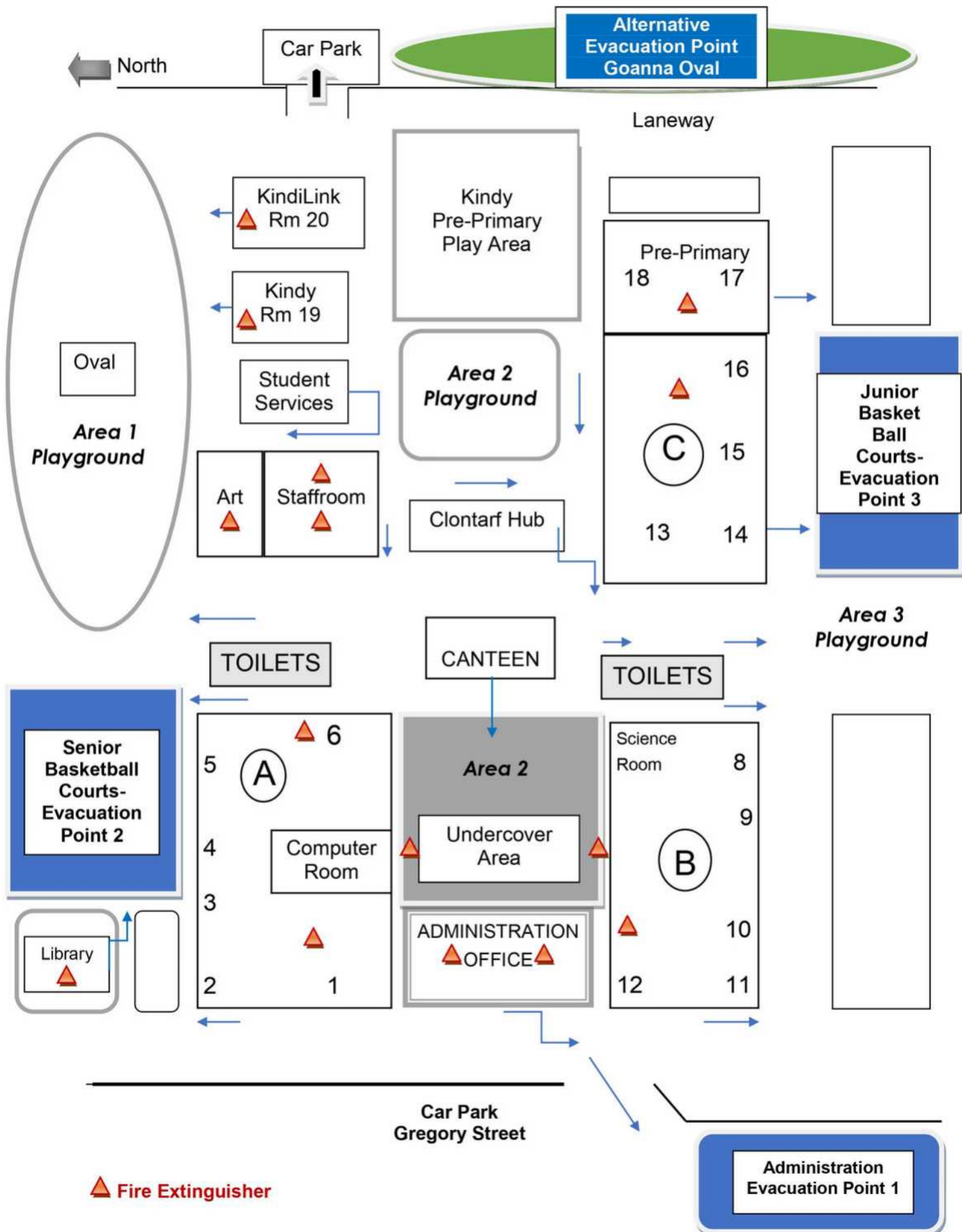
- In the event that a Red Alert is proclaimed after 2.00pm, schools will remain closed the following day.
- In the event that a Red Alert is proclaimed after 2.00pm but subsequently cancelled, the Regional Executive Director in consultation with the Cyclone Committee has the discretion to ensure that schools open the following day.

AFTER THE CYCLONE

If a Red Alert is called after 2.00pm schools will generally be closed the following day to allow for assessment and repair of serious damage. Please continue to listen to the radio to receive information as to when schools will open.

Please keep yourself informed via the radio, until all threats from the cyclone is past.

South Newman Primary School Evacuation Points





South Newman Primary School

Iron, spirit & courage

South Newman Primary School
Gregory Avenue
Newman WA 6753

9154 3950

snps.wa.edu.au

southnewman.ps@education.wa.edu.au

<https://www.facebook.com/South-Newman-Primary-School-108714100831594>



Don't forget to download our school's SkoolBag app to ensure that you are kept in the loop on:

• School newsletters	• Cancellations
• Notices	• Reminders
• Events	• ...and more!

INSTALLATION INSTRUCTIONS

Just download the "SkoolBag" app on your phone, open the app and add our school!